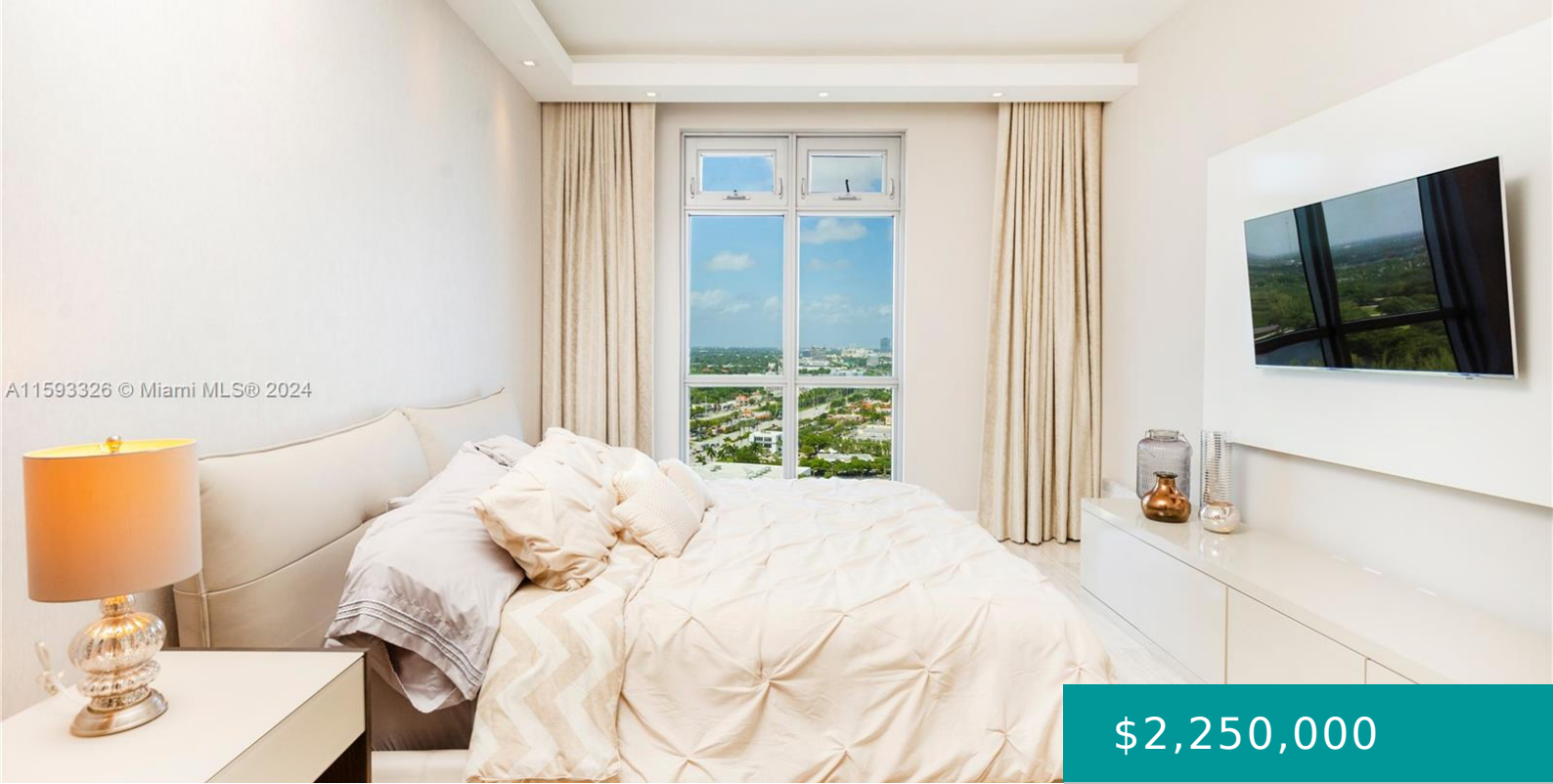


A11593326 © Miami MLS® 2024



\$2,250,000

17301 BISCAYNE BLVD L-PH-10

<https://miamirealestateinc.com>

MARINA PALMS RESIDENCES NORTH CONDO UNIT LPH10 UNDIV
0.5224% INT IN COMMON ELEMENTS OFF REC 28606-1211

Presenting the spectacular Lower Penthouse at Marina Palms Residences. This exquisite unit, designed by Gabriela Blasini, features 3 bedrooms plus a den, 3.5 bathrooms, and is meticulously finished with high-end materials. It boasts 2,390 sq. ft. of marble floors, [...]

- 3 beds
- 4 baths
- Condominium
- Residential
- Active
- 2390 sq ft

Basics



Category: Residential

Status: Active

Bathrooms: 4 baths

Floors: 25 floors

Year built: 2015

Subdivision Name: MARINA PALMS RESIDENCES N

Type: Condominium

Bedrooms: 3 beds

Half baths: 1 half bath

Area: 2390 sq ft

View: Bay, City, Intercoastal

County: Miami-Dade

Building Details

Architectural Style: Other

Covered Spaces: 2

Floor covering: Marble

Construction Materials: Block

Garage Spaces: 2

Amenities & Features

Parking Features: TwoOrMoreSpaces, Valet

Patio & Porch Features: Balcony, Open

Waterfront Features: Bayfront, NavigableWater, OceanAccess

Cooling: CentralAir

Furnished: Unfurnished

Interior Features: BreakfastArea, EntranceFoyer, KitchenIsland, LivingDiningRoom, CustomMirrors, SittingAreaInPrimary

Security Features: ComplexFenced, ElevatorSecured, SecurityGuard

Association Amenities: Marina, Clubhouse, Elevators, FitnessCenter, Barbecue, PicnicArea, Sauna, SpaHotTub, Trash

Utilities: CableAvailable

Exterior Features: Balcony, SecurityHighImpactDoors

Heating: Central

Appliances: Dryer, Dishwasher, IceMaker, Microwave, Refrigerator

Expenses, Fees & Taxes

Association Fee: \$2,134

Tax Year: 2023

Tax Annual Amount: \$28,847

Miscellaneous

Association Fee Frequency: Monthly **List Office Name:** Realty One Group Estates

Listing Terms: Cash, Conventional

