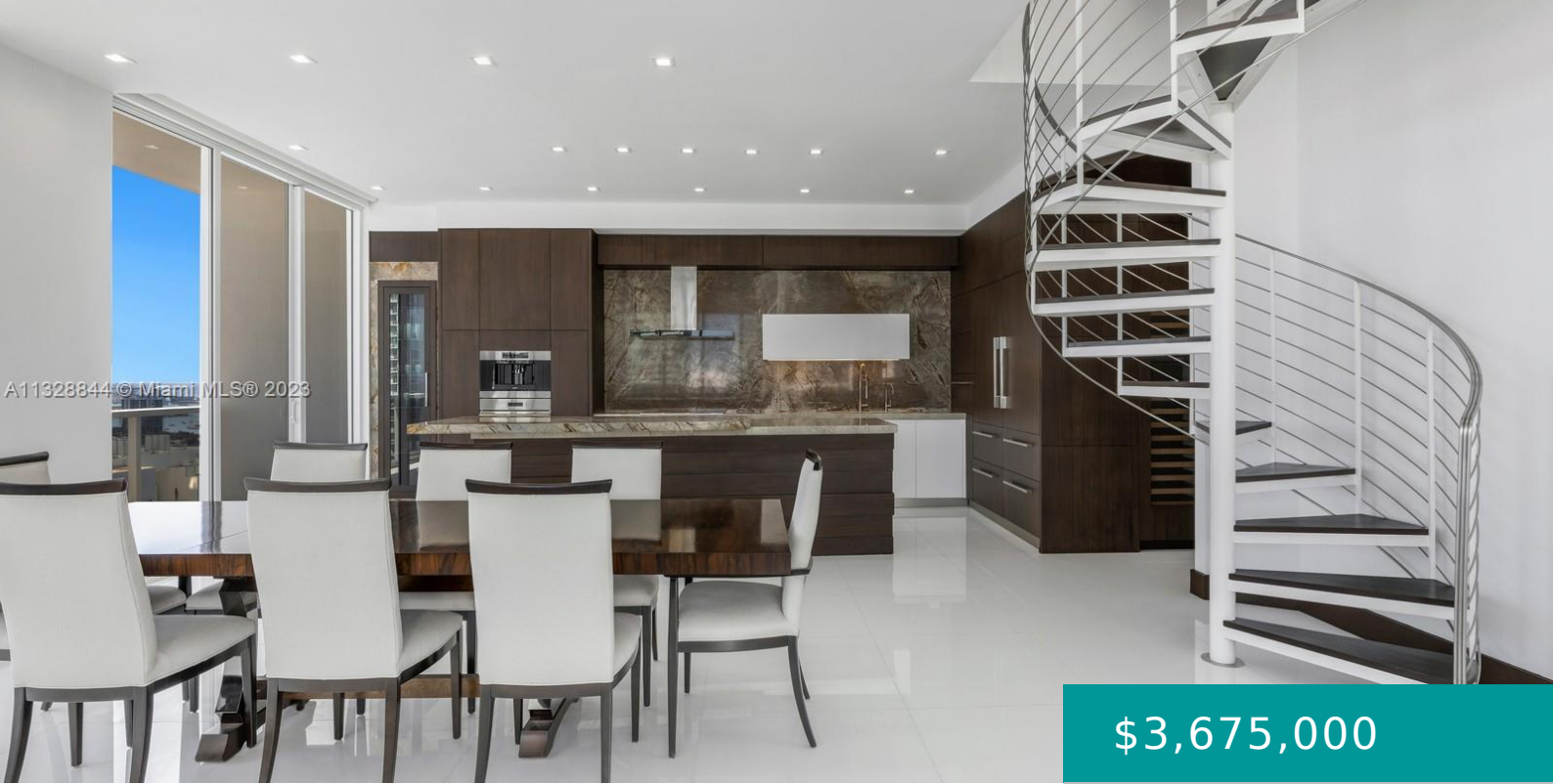


A11328844 © Miami MLS © 2023



\$3,675,000

600 NE 27TH ST PH1 MIAMI FL 33137

<https://miamirealestateinc.com>

Completed remodeled two-story penthouse in the heart of East Edgewater with stunning panoramic water + city views boasting 2,832 SF of interior and a 1,512 SF rooftop plus terraces. With extreme attention to detail, this unique 4 bedroom + 5.5 bathrooms + Laundry + rooftop unit has been professionally designed and offers an expansive open [...]

- 4 beds
- 6 baths
- Condominium
- Residential
- Active
- 2832 sq ft

Basics

Bathrooms Half: 1

Lot Size Units: Square Feet

Type: Condominium

Bedrooms: 4 beds

Area: 2832 sq ft

Bathrooms Full: 5

Category: Residential

Status: Active

Bathrooms: 6 baths

Year built: 2015



Rooms & Units Description

Unit Number: PH1

Location Details

County Or Parish: Miami-Dade County

Property details

Direction Faces: East

Subdivision Name: BAY HOUSE MIAMI CONDO

Parcel Number: 01-32-30-097-0390

Possession: Closing & Funding

Property Features



Interior Features: Wet Bar,Built-in Features,Bedroom on Main Level,Closet Cabinetry,Entrance Foyer,Eat-in Kitchen,First Floor Entry,Kitchen Island,Living/Dining Room,Custom Mirrors,Main Living Area Entry Level,Split Bedrooms,Separate Shower

Window Features: Blinds,Impact Glass

Parking Features: Attached,Garage,Two or More Spaces

Architectural Style: High Rise,Penthouse

Construction Materials: Block

Cooling Y/N: 1

Flooring: Ceramic Tile

Garage Y/N: 1

Heating Y/N: 1

View: Bay,Ocean

Entry Level: 37

Property Attached Y/N: 1

Stories Total: 37

Laundry Features: Laundry Tub

Pool Features: Association

Appliances: Built-In Oven,Dryer,Dishwasher,Electric Range,Microwave,Refrigerator,Washer

Association Amenities: Clubhouse,Fitness Center,Barbecue,Picnic Area,Pool,Spa/Hot Tub,Elevator(s)

Cooling: Central Air,Electric

Covered Spaces: 4

Garage Spaces: 4

Heating: Central,Electric

Pets Allowed: Conditional,Yes

View Y/N: 1

Entry Location: 37

Attached Garage Y/N: 1

Miscellaneous

Public Survey Township: 1

Syndication Remarks: Completed remodeled two-story penthouse in the heart of East Edgewater

Virtual Tour URL: <https://vimeo.com/790547995>

Public Survey Section: 30

Year Built Details: Resale

Fees & Taxes



Tax Annual Amount: 28653

Tax Year: 2022

Tax Legal Description: BAY HOUSE
MIAMI CONDO UNIT PH1 UNDIV 1.11%
INT IN COMMON ELEMENTS OFF REC
29592-4053

Association Fee: 1710

Association Fee Frequency: Monthly

Association Fee Includes: Amenities,Hot
Water,Insurance,Maintenance Grounds,Maintenance
Structure,Recreation Facilities,Sewer,Trash,Water

Courtesy of

Office Name: One Sotheby's International Realty

